

## DR-110 Voltage / Current Datalogger Recorder

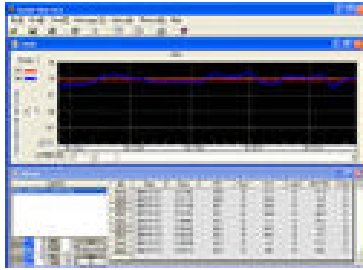


The low cost, miniature, Voltage / Current recorder, DR-110 is the battery powered, wall-mounted, easy to use device that will measure and record up to 10,000 data each channel of DC voltage or DC current. Store the data into non-volatile solid state memory providing excellent data security even if the battery is run down.

The compact device can be controlled from the computer or record stand alone mounted by everywhere that is requested. The quality datalogger makes data retrieval quicker and easier via USB interface and the user-friendly software, Record Monitor S.

### Features:

- 4 1/2 Digit LCD display, 16-bit A/D.
- Voltage + Current Recorder : DCV / DCmA
- LCD display with Battery capacity indication in 5 segments
- CH1 – DC Voltage Input, plug-in  
CH2 – DC Current Input, plug-in
- Resolution: DCV – 0.001 / DCmA – 0.01
- Accuracy: 0.2%+10dgt. (18°C~28°C)
- Data Logging up to 10,000 records per channel
- Easy function set up by Window software.
- Interval Measurement: by frequency adjustable from 10 Second to 59 Minutes.
- Battery Life: 1 year at measuring rate, 15min.
- The USB transmitted interface with cable & Window software - Record Monitor S.



Record Monitor S software

|                                  |   |
|----------------------------------|---|
| <b>Specification:</b>            |   |
| DC Voltage Range:                | ±19.999V  |
| DC Current Range:                | ±199.99mA   |
| Accuracy:                        | 0.2 % + 10dgt. (inside temperature range of 18°C~28°C / 64°F~82°F ) |
| Temperature Coefficient:         | 0.04 % per °C (outside temperature range of 18°C~28°C / 64°F~82°F ) |
| Input Impedance of Voltage:      | 1MO   |
| Loop Impedance of Current:       | 1O  |
| Measure Interval Time of Record: | 10 seconds ~ 59 minutes and 50 seconds                              |
| Logger:                          | maximum 9999 samples  |
| Battery Type:                    | CR2032  |
| Battery Life:                    | approx. one year (Interval=15min.)                                  |
| Operating Temperature:           | -10°C~+60°C (14°F~140°F)  |
| Storage Temperature:             | -20°C~+70°C (-4°F~+158°F)   |
| Dimension:                       | 86mmX45mmX25mm ( LxWxH )  |
| Weight (include battery):        | approx. 63g   |

<Specifications are subject to change without notice.>

**Ordering information:**

**DR-110:** Datalogger Recorder, DCV & DCmA, Dual Channel, LCD display, Software & USB Cable

## DR-15 Series Thermocouple + Ambient Temperature Datalogger Recorder

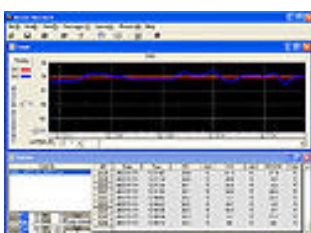


The low cost, miniature, Thermocouple based temperature recorders, DR-15 Series are battery powered, wall-mounted, easy to use devices that will measure and record up to 10,000 data each channel of Thermocouple or ambient temperature. Store the data into non-volatile solid state memory providing excellent data security even if the battery is run down.

The compact devices can be controlled from the computer or record stand alone mounted by everywhere that is requested. The quality datalogger makes data retrieval quicker and easier via USB interface and the user-friendly software, Record Monitor S.

### Features:

- 4 1/2 Digit LCD display, 16-bit A/D.
- Ambient Temperature + Thermocouple Recorder : K, J, T, E Types (DR-154)
- LCD display with Battery capacity indication in 5 segments
- CH1 – Ambient Temperature Sensor, built-in  
CH2 – Thermocouple Input, plug-in
- Resolution: 0.1
- Accuracy:  $\pm 0.15\% + 0.5^{\circ}\text{C}$  ( $18^{\circ}\text{C} \sim 28^{\circ}\text{C}$ )
- Data Logging up to 10,000 records per channel
- Easy function set up by Window software.
- Interval Measurement: by frequency adjustable from 10 Second to 59 Minutes.
- Battery Life: 1 year at measuring rate, 15min.
- The USB transmitted interface with cable & Window software - Record Monitor S.



Record Monitor S software

|                                   |  |
|-----------------------------------|--|
| <b>Specification:</b>             |  |
| Thermocouple Range:               | K Type : -200°C~1372°C (-328°F~2501°F)<br>J Type : -210°C~1200°C (-346°F~2192°F) (DR-154 only)<br>T Type : -250°C~400°C (-418°F~752°F) (DR-154 only)<br>E Type : - 210°C~1000°C (-346°F~1832°F) (DR-154 only)  |
| Ambient Temperature Sensor Range: | -20°C~70°C (-4°F~158°F)  |
| Accuracy:                         | Thermocouple K, J, T, E : ± 【0.15% of reading +0.5°C(1°F)】<br>【 below -100°C (-148°F) : add 0.3% of reading for K, J, T , or 0.5% of reading for E 】<br><br>Ambient Temperature Sensor : ±0.6°C (1.2°F) inside temperature range of 0°C~45°C (32°F~113°F ) ; ±1.5°C (3°F) outside temperature range of 0°C~45°C (32°F~113°F) |
| Resolution:                       | 0.1 < 2000 ; 1 2000  |
| Temperature Coefficient:          | 0.02 % of reading +0.05°C per °C (0.1°F per °F) outside the specified +18°C to 28°C (+64°F to +82°F) 【 below -100°C (-148°F) : add 0.1% of reading for K, J, T , or 0.2% of reading for E 】  |
| Measure Interval Time of Record:  | 10 seconds ~ 59 minutes and 50 seconds   |
| Logger:                           | maximum 9999 samples   |
| Battery Type:                     | CR2032   |
| Battery Life:                     | approx. one year (Interval=15min.)   |
| Operating Temperature:            | -20°C~+70°C (-4°F~+158°F)  |
| Storage Temperature:              | -30°C~+80°C (-22°F~+176°F)   |
| Dimension:                        | 86mmX45mmX25mm ( LxWxH )   |
| Weight (include battery) :        | approx. 63g  |

<Specifications are subject to change without notice.>

#### **Ordering information:**

**DR-151:** Datalogger Recorder, K Type & Ambient Temperature, Dual Channel, LCD display, Software & USB Cable

**DR-154:** Datalogger Recorder, K, J, T, E Types & Ambient Temperature, Dual Channel, LCD display, Software & USB Cable

## DR-16 Series RTD + Ambient Temperature Datalogger Recorder

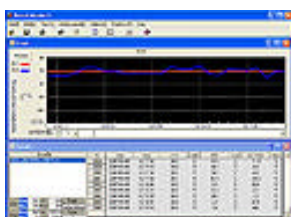


The low cost, miniature, RTD based temperature recorders, DR-16 Series are battery powered, wall-mounted, easy to use devices that will measure and record up to 10,000 data each channel of RTD or ambient temperature. Store the data into non-volatile solid state memory providing excellent data security even if the battery is run down.

The compact devices can be controlled from the computer or record stand alone mounted by everywhere that is requested. The quality datalogger makes data retrieval quicker and easier via USB interface and the user-friendly software, Record Monitor S.

### Features:

- 4 1/2 Digit LCD display, 16-bit A/D.
- Ambient Temperature + Platinum RTD Recorder : Pt 385 1000, Pt 3916 1000, Pt 3926 1000 (DR-163)
- LCD display with Battery capacity indication in 5 segments
- CH1 – Ambient Temperature Sensor, built-in  
CH2 – RTD Input, plug-in
- Resolution: 0.1
- Accuracy:  $\pm 0.1\%$  reading  $+0.5^{\circ}\text{C}$ . ( $18^{\circ}\text{C}\sim 28^{\circ}\text{C}$ )
- Data Logging up to 10,000 records per channel
- Easy function set up by Window software.
- Interval Measurement: by frequency adjustable from 10 Second to 59 Minutes.
- Battery Life: 1 year at measuring rate, 15min.
- The USB transmitted interface with cable & Window software - Record Monitor S.



Record Monitor S software

**Specification:**

|                                   |   |
|-----------------------------------|---|
| RTD range:                        | Pt385 1000 : -200°C~800°C (-328°F~1472°F)<br>Pt3916 1000 : -200°C~600°C (-328°F~1112°F) (DR-163 only)<br>Pt3926 1000 : -200°C~600°C (-328°F~1112°F) (DR-163 only)   |
| Ambient Temperature Sensor Range: | -20°C~70°C (-4°F~158°F)   |
| Accuracy:                         | RTD – ± 【0.1% of reading +0.5°C (1°F)】<br><br>Ambient Temperature Sensor : ±0.6°C (1.2°F) inside temperature range of 0°C~45°C (32°F~113°F) ; ±1.5°C (3°F) outside temperature range of 0°C~45°C (32°F~113°F) |
| Resolution:                       | 0.1   |
| Temperature Coefficient:          | 0.01% of reading + 0.03°C per °C (0.05°F per °F) outside the specified+18°C to 28°C (+64°F to +82°F) range  |
| Measure Interval Time of Record:  | 10 seconds ~ 59 minutes and 50 seconds  |
| Logger:                           | maximum 9999 samples  |
| Battery Type:                     | CR2032  |
| Battery Life:                     | approx. one year (Interval=15min. )   |
| Operating Temperature:            | -20°C~+70°C (-4°F~+158°F)   |
| Storage Temperature:              | -30°C~+80°C (-22°F~+176°F)  |
| Dimension:                        | 86mmX45mmX25mm ( LxWxH )  |
| Weight (include battery) :        | approx. 63g   |

<Specifications are subject to change without notice.>

**Ordering information:**

**DR-161:** Datalogger Recorder, RTD Pt 385 100 Ohm & Ambient Temperature, Dual Channel, LCD display, Software & USB Cable

**DR-163:** Datalogger Recorder, RTD Pt 385, 3916, 3926 100 Ohm & Ambient Temperature, Dual Channel, LCD display, Software & USB Cable

## DR-210 Waterproof Voltage / Current Datalogger Recorder



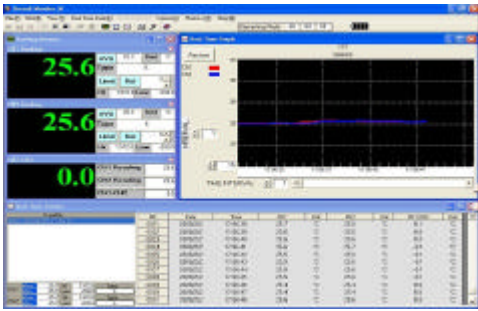
DR-210, a water-proof miniature, battery powered, wall mounted, Voltage / Current recorder is a powerful and flexible data monitoring device that will measure and display current and min/max data you want without download or control by computer. To outperform the monitors, the recorder featured with Hi/Lo Alarm, adjustable Interval Measurement & predefined recording Setup in Loop recording or Programmable timer recording that compacted all in one box.

With recording up to 80,000 measurements per channel, all the data store into non-volatile solid state memory providing excellent data security even if the battery is run down. All the current or recorded data can retrieve quick and easy via USB com port by the user- friendly software, Record Monitor M for further control & analysis.

### Features:

- 4 1/2 Digit LCD Dual display, 16-bit A/D, IP66 Waterproof.
- Voltage + Current Recorder : DCV / DCmA
- Data Logging up to 80,000 records per channel.
- LCD display with Battery capacity indication in 5 segments.
- CH1 – DC Voltage Input, plug-in  
CH2 – DC Current Input, plug-in
- Resolution: DCV – 0.001 / DCmA – 0.01
- Accuracy: 0.2%+10dgt. (18°C ~ 28 °C)
- Hi/Lo Alarm, MAX/MIN.
- Up to 9 sections of predefined data recording Setup for daily or annual Loop recording or Programmable timer recording.
- Interval Measurement: by frequency adjustable from 1 Second to 24 Hours.
- Battery Life: 3 years at measuring rate, 15min.
- Data retrieve & Control via computer & Window software, Record Monitor M thru

USB interface.



Record Monitor M software

**Specification:**

|                                     |   |
|-------------------------------------|---|
| DC Voltage Range:                   | ±19.999V  |
| DC Current Range:                   | ±199.99mA   |
| Resolution:                         | DC Voltage : 0.001 ; DC Current : 0.01                                |
| Accuracy:                           | 0.2 % + 10dgt. ( inside temperature range of 18°C~28°C / 64°F ~82°F ) |
| DC Voltage Temperature Coefficient: | 0.04 % per °C ( outside temperature range of 18°C~28°C / 64°F~82°F )  |
| Input Impedance of Voltage:         | 1MΩ   |
| Loop Impedance of Current:          | 1Ω  |
| Measure Interval Time of Record:    | 1second ~ 23 hours 59 minutes and 50 seconds                          |
| Logger:                             | maximum 80000 samples   |
| Battery Type:                       | CR123A  |
| Battery Life:                       | approx. 3.5 years (Interval=15min. at PC on-line not function)        |
| Operating Temperature:              | -10°C~+60°C (14°F~140°F)  |
| Storage Temperature:                | -20°C~+70°C (-4°F~+158°F)   |
| Dimension:                          | 106mmX66mmX25mm ( LxWxH )   |
| Weight (include battery):           | approx. 140g  |

<Specifications are subject to change without notice.>

**Ordering information:**

**DR-210:** Datalogger Recorder, 80000/Channel, Dual Channel, LCD display, Software & IR/USB Cable, Input DCV + DCmA



## DR-267 Waterproof Thermocouple Dual Channel Datalogger Recorder

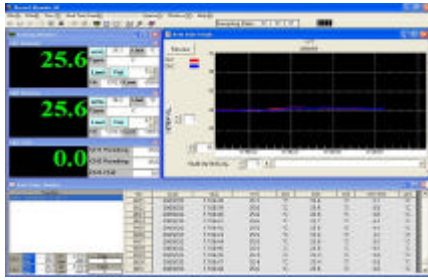


DR-267, a water-proof miniature, battery powered, wall mounted, Thermocouple multi-Type dual channel recorder is a powerful and flexible temperature monitoring device that will measure and display current and min/max data you want without download or control by computer. To outperform the monitors, the recorder featured with Hi/Lo Alarm, adjustable Interval Measurement & predefined recording Setup in Loop recording or Programmable timer recording that compacted all in one box.

With recording up to 80,000 measurements per channel, all the data store into non-volatile solid state memory providing excellent data security even if the battery is run down. All the current or recorded data can retrieve quick and easy via USB com port by the user- friendly software, Record Monitor M for further control & analysis.

### Features:

- 4 1/2 Digit LCD Dual display, 16-bit A/D, IP66 Waterproof.
- 2 channel, Thermocouple Recorder : K, J, T, E, R, S, N Types
- Data Logging up to 80,000 records per channel.
- LCD display with Battery capacity indication in 5 segments.
- CH1 –Thermocouple Input, plug-in  
CH2 –Thermocouple Input, plug-in
- Resolution: 0.1
- Accuracy:  $\pm (0.15\% \text{ reading} + 0.5^{\circ}\text{C})$
- Hi/Lo Alarm, MAX/MIN.
- Up to 9 sections of predefined data recording Setup for daily or annual Loop recording or Programmable timer recording.
- Interval Measurement: by frequency adjustable from 1 Second to 24 Hours.
- Battery Life: 3 years at measuring rate, 15min.
- Data retrieve & Control via computer & Window software, Record Monitor M thru USB interface.



Record Monitor M software

|                                  |  |
|----------------------------------|--|
| <b>Specification:</b>            |  |
| Thermocouple Range:              | K Type : -200°C~1372°C (-328°F~2501°F)<br>J Type : -210°C~1200°C (-346°F~2192°F)<br>T Type : -250°C~400°C (-418°F~752°F)<br>E Type : - 210°C~1000°C (-346°F~1832°F)<br>R Type : -0°C~+1767°C (-32°F ~+3213°F)<br>S Type : -0°C~+1767°C (-32°F ~+3213°F)<br>N Type : -150°C~+1300°C (-238°F ~+2372°F) |
| Accuracy:                        | K, J, T, E, N : ± 【0.15% of reading +0.5°C (1°F)】 【 below -100°C (-148°F) : add 0.3% of reading for K, J, T , or 0.5% of reading for E, N】<br>R, S : ± 【0.3% of reading +2°C (4°F)】  |
| Resolution:                      | 0.1 < 2000 ; 1 2000  |
| Temperature Coefficient:         | 0.02 % of reading +0.05°C per °C (0.1°F per °F) outside the specified +18°C to 28°C (+64°F to +82°F) 【below -100°C (-148°F) : add 0.1% of reading for K, J, T , or 0.2% of reading for E, N】   |
| Measure Interval Time of Record: | 1 second ~ 23 hours 59 minutes 50 seconds  |
| Logger:                          | maximum 80000 samples  |
| Battery Type:                    | CR123A   |
| Battery Life:                    | approx. 3 years (Interval=15min. at PC on-line not function)   |
| Operating Temperature:           | -10°C ~+60°C (14°F ~140°F)   |
| Storage Temperature:             | -20°C ~+70°C (-4°F ~+158°F)  |
| Dimension:                       | 106mmX66mmX25mm ( LxWxH )  |
| Weight (include battery):        | approx. 140g   |

<Specifications are subject to change without notice.>

**Ordering information:**

**DR-267:** Datalogger Recorder, 80000/Channel, Dual Channel, LCD display, Software & IR/USB Cable, Input Thermocouple K, J, T, E, R, S, N Types

## DR-293 Waterproof RTD Dual Channel Datalogger Recorder



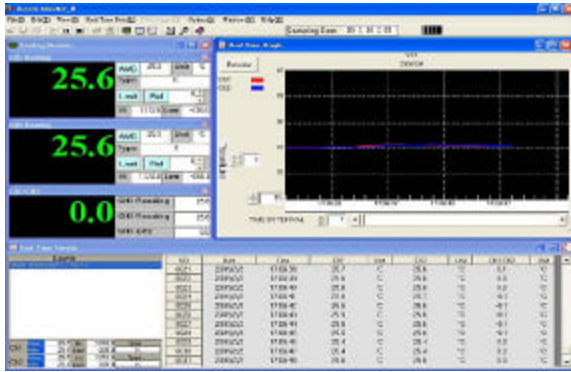
DR-293, a water-proof miniature, battery powered, wall mounted, RTD multi-standard dual channel recorder is a powerful and flexible temperature monitoring device that will measure and display current and min/max data you want without download or control by computer. To outperform the monitors, the recorder featured with Hi/Lo Alarm, adjustable Interval Measurement & predefined recording Setup in Loop recording or Programmable timer recording that compacted all in one box.

With recording up to 80,000 measurements per channel, all the data store into non-volatile solid state memory providing excellent data security even if the battery is run down. All the current or recorded data can retrieve quick and easy via USB com port by the user- friendly software, Record Monitor M for further control & analysis.

### Features:

- 4 1/2 Digit LCD Dual display, 16-bit A/D, IP66 Waterproof.
- 2 channel, RTD Recorder : Pt 385, Pt 3916, Pt 3926 1000
- Data Logging up to 80,000 records per channel.
- LCD display with Battery capacity indication in 5 segments.
- CH1 – RTD Input, plug-in  
CH2 – RTD Input, plug-in
- Resolution: 0.1
- Accuracy:  $\pm (0.1\% \text{ reading} + 0.5^{\circ}\text{C})$ .
- Hi/Lo Alarm, MAX/MIN.
- Up to 9 sections of predefined data recording Setup for daily or annual Loop recording or Programmable timer recording.
- Interval Measurement: by frequency adjustable from 1 Second to 24 Hours.
- Battery Life: 3 years at measuring rate, 15min.

■ Data retrieve & Control via computer & Window software, Record Monitor M thru USB interface.



Record Monitor M software

### Specification:

|                                  |   |
|----------------------------------|---|
| RTD range:                       | Pt385 1000 : -200°C~800°C (-328°F~1472°F)<br>Pt3916 1000 : -200°C~600°C (-328°F~1112°F)<br>Pt3926 1000 : -200°C~600°C (-328°F~1112°F) |
| Accuracy:                        | ± 【0.1% of reading +0.5°C (1°F)】  |
| Resolution:                      | 0.1 < 2000 ; 1 2000   |
| Temperature Coefficient:         | 0.01% of reading + 0.03°C per °C (0.06°F per °F)<br>outside the specified+18°C to 28°C (+64°F to +82°F)<br>range                      |
| Measure Interval Time of Record: | 1 second ~ 23 hours 59 minutes 50 seconds   |
| Logger:                          | maximum 80000 samples   |
| Battery Type:                    | CR123A  |
| Battery Life:                    | approx. 3.5 years (Interval=15min. at PC on-line not function)  |
| Operating Temperature:           | -10°C ~+60°C (14°F ~140°F)  |
| Storage Temperature:             | -20°C ~+70°C (-4°F ~+158°F)   |
| Dimension:                       | 106mmX66mmX25mm ( LxWxH )   |
| Weight (include battery):        | approx. 140g  |

<Specifications are subject to change without notice.>

### Ordering information:

**DR-293:** Datalogger Recorder, 80000/Channel, Dual Channel, LCD display,  
Software & IR/USB Cable, Input RTD Pt 385, 3916, 3926 100 Ohm