

# Data-Logging Thermometer (Water-Proof)

## TX-600N

- IP66 Water-Proof
- Accept 9 T/C Types
- Dual Probes (T1-T2)
- Data-Logger Built-In
- USB/RS-232 Output, with Software
- Fine Adjustment Function
- Hi/Lo Alarm
- Max./Min./Avg./Hold
- LED Back-Light
- CE and RoHS Approved



### Specifications of TX-600N

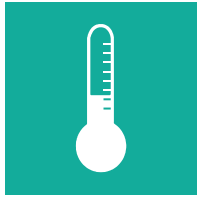
<b>Input Types</b>	K, J, E, T, B, R, N, S, C nine thermocouple types; with Dual-Channel input
<b>Measurement Range</b>	K : - 200.0 ~ + 1370.0 °C ( -328.0 ~ +2498.0 °F) J : - 200.0 ~ + 1200.0 °C ( -328.0 ~ +2192.0 °F) E : - 210.0 ~ + 1000.0 °C ( -346.0 ~ +1832.0 °F) T : - 220.0 ~ + 400.0 °C ( -364.0 ~ +752.0 °F) B : + 320.0 ~ + 1800.0 °C (+608.0 ~ +3272.0 °F) R : - 20.0 ~ + 1700.0 °C ( -4.0 ~ +3092.0 °F) N : - 200.0 ~ + 1300.0 °C ( -328.0 ~ +2372.0 °F) S : - 20.0 ~ + 1750.0 °C ( -4.0 ~ +3182.0 °F) C : 0.0 ~ + 2300.0 °C (+32.0 ~ +4172.0 °F)
<b>Accuracy*</b>	± 0.1% of rdg + 0.1°C (In 23±5°C operating environment) ± 0.1% of rdg + 0.2°C (Out off 23±5°C operating environment) ※Built-in cold junction compensation function.
<b>Resolution</b>	K, J, E, T, N, C Type : 0.1°C / 0.1°F B, R, S Type : 0.5°C / 0.5°F
<b>Reading Rate*</b>	Approx. 0.4 sec.
<b>Logging Sampling Rate</b>	2 seconds to 120 minutes (User Selectable)
<b>Memory</b>	16,000 readings x 2CH
<b>Baud Rate</b>	57,600
<b>Main Functions</b>	Switchable 9 kinds of thermocouple type input, Hi/Lo Alarm, T1-T2, Data hold, Max/Min/Avg Functions, USB/RS-232 interface, Perpetual calendar, Data-Logging, Switchable °C / °F, AC/DC power, Battery sign and low battery warning, Auto / Manual shutdown, Calibration function, Large LED back-light, IP66 water and dust proof.
<b>Output</b>	a. Software with USB Interface cable, b. RS-232 Output
<b>Power Source</b>	One 9 V battery or AC Adaptor (option)
<b>Input Connections</b>	Standard mini thermocouple socket x 2
<b>Operating Environment</b>	-20 ~ +60°C ; 0~100%RH
<b>Dimensions / Weight</b>	150 x 75 x 28 mm, Approx. 320g (battery included)

\*About accuracy and sampling rate excludes errors generated by temperature probe.

### Ordering Information:

① TX-600N	Digital thermometer, 2ch. Data-Logger
② Temp. Probes	LP series ※Please refer to catalog P30-P37
③ LP-C6U-W	Waterproof plug and cable for RTD Temperature probe
④ TU-RS232-W	RS-232 Interface cable
⑤ TU-USB-W	USB computer interface cable
⑥ TU-655C	Plastic carrying case
⑦ TU-6019 / 6029	AC Adaptor
⑧ DU-606B	Instrument Docking Base



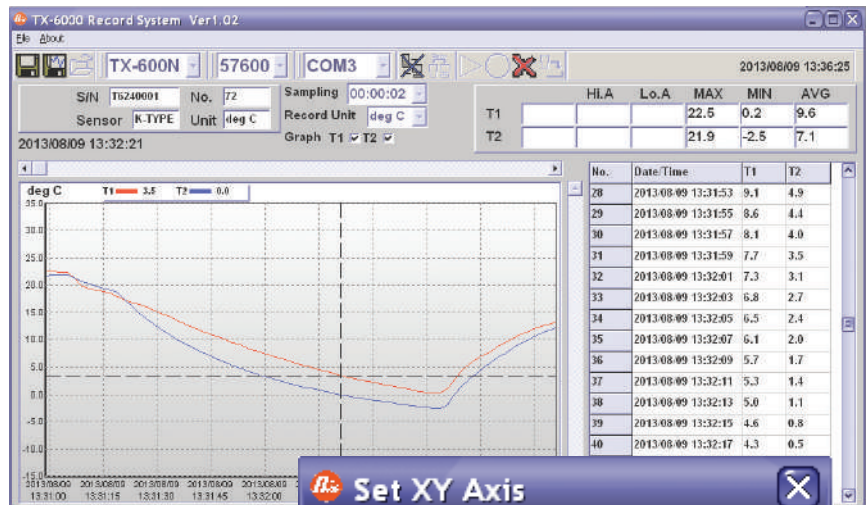


# Data Logger Software & Accessories

## TX-600N

### Software Features:

- Trend Line Display
- Graphic Zoom in, Zoom out and Storage
- Instrument Status Display
- Max. / Min. / Average
- Real-time Data Recording
- Alarm Display
- Temperature Conversion
- Saving and Loading Data
- Data Table View
- Recorded Data Download



**Set XY Axis**

X Axis Maximum: 2013/08/09 13:33:21

X Axis Minimum: 2013/08/09 13:30:59

Y Axis Maximum: 35.1

Y Axis Minimum: -15.1

Enter

### Explanation of TX-600N:

No.	Model No.	Descriptions
①	TX-600N	Thermometer / Data Logger
②	TU-USB-W	USB computer interface cable
③	TU-RS232-W	RS-232 Interface cable
④	Software CD	Software description
⑤	TU-6019/6029	AC Adaptor
⑥	TU-609	Battery 9V006P
⑦	User's manual	Multi-national user's manual
⑧	TU-655C	Plastic carrying case
⑨	DU-606B	Instrument docking Base

